

Developing a Statewide Autism Program: A Training Model for Serving Students with ASD



Joel Arick, PhD

Director, OrPATS Project

www.orpats.org

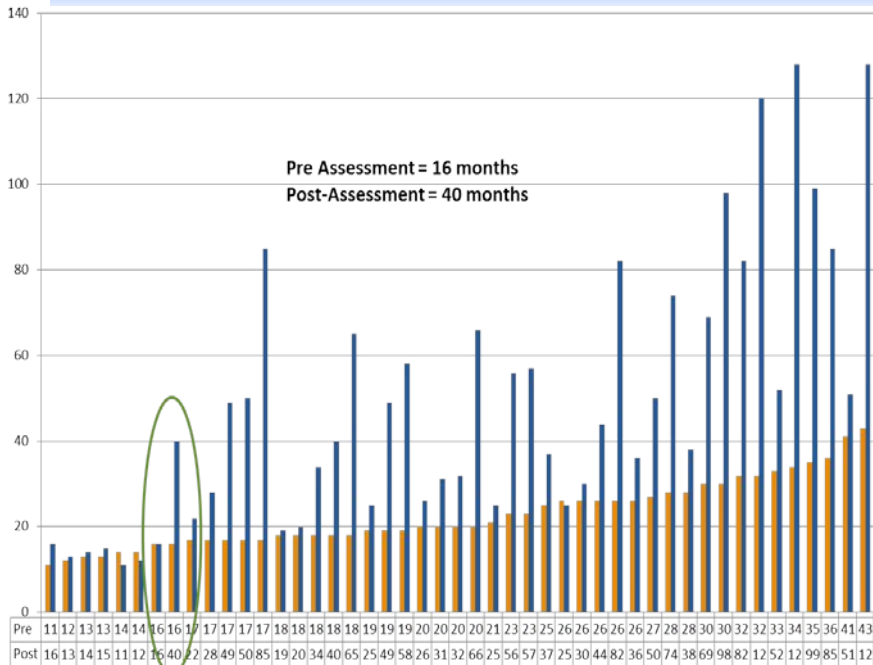
Oregon Program Autism Training Sites and Supports Project
Funded by the Oregon Department of Education and in Collaboration with the
Oregon Regional Programs and Local School Districts

Building Sustainable Systems of Support Within Local School Districts

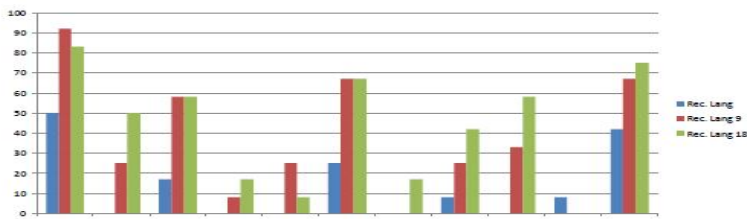
How Do We Get There and Stay There?



Focus on Positive Outcomes for: Students, Staff and Parents

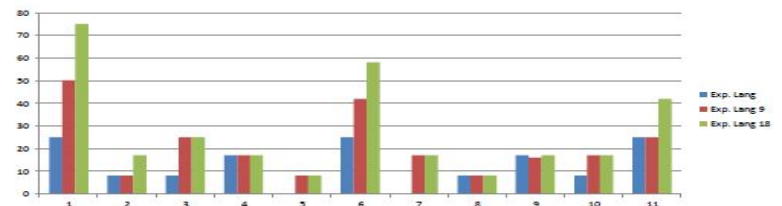


Educational Assessment Receptive Language



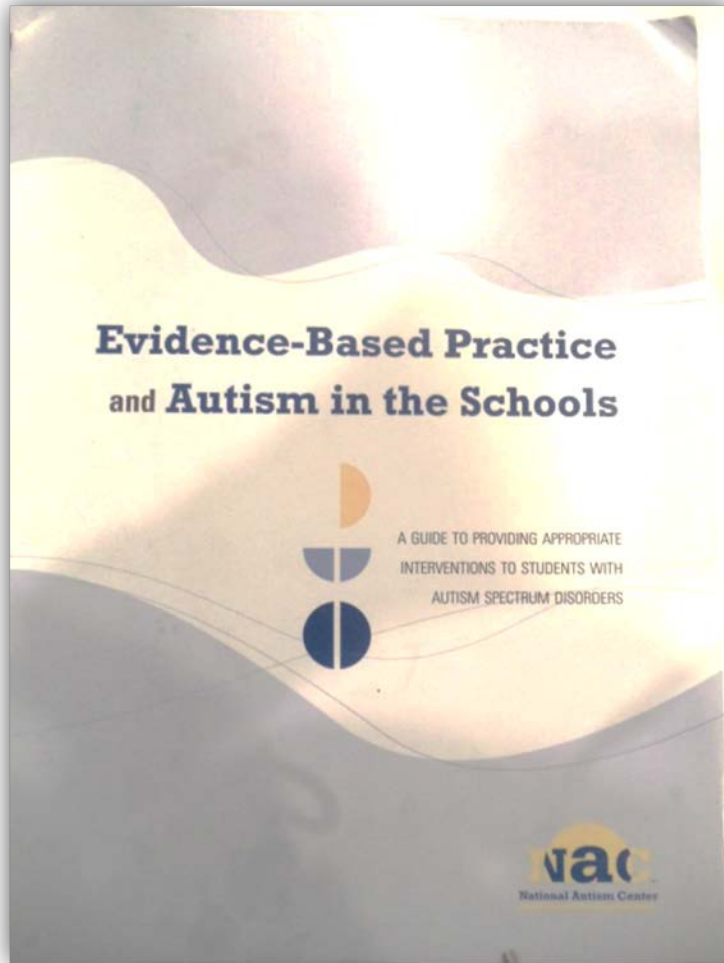
- Following 1 and 2 step commands
- 91% of students made progress from initial assessment to 17 month assessment

Expressive Language



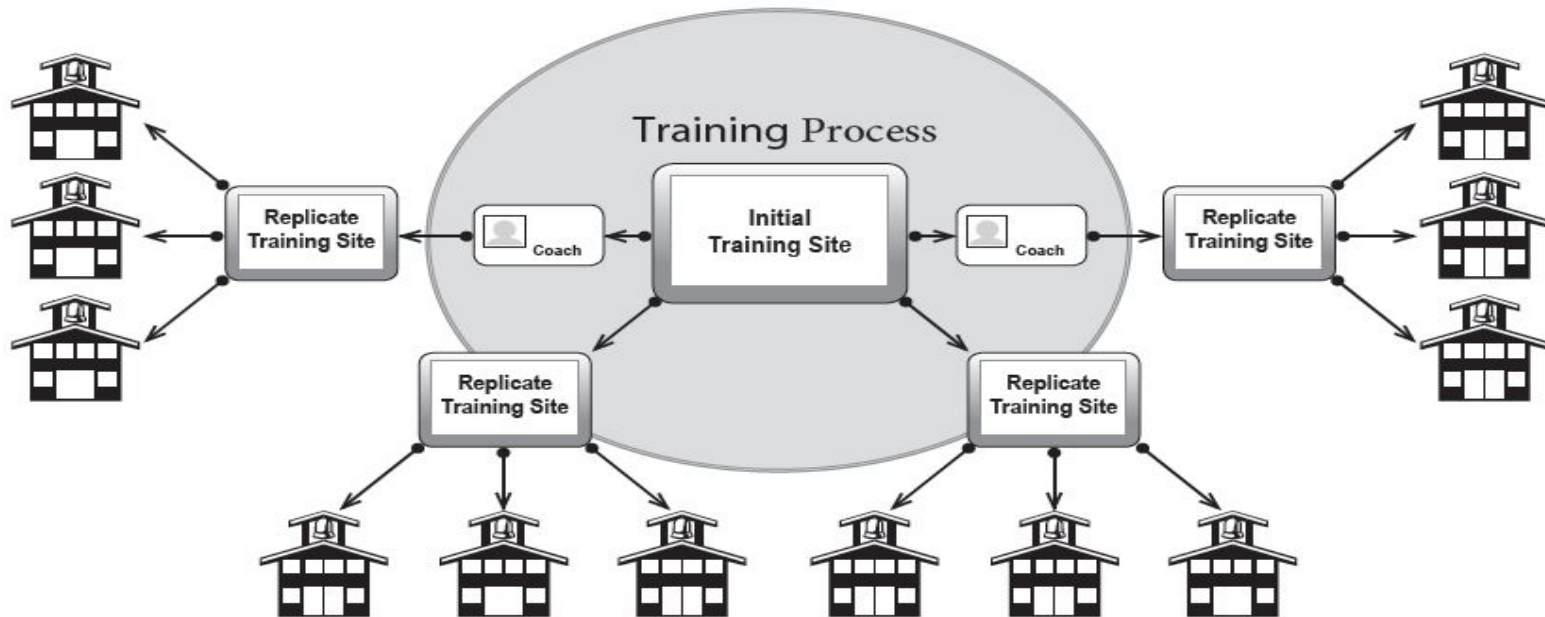
- Using words to answer questions
- 73% made progress

Evidence-based Instructional Practices Effective Professional Development



Empower School Districts

Administration, Instructional Staff, Parents, Students



Training Site

Organized to model evidence-based practices, train staff, and serve students. These training sites model the use of effective practices throughout the student's instructional day.



Coach

A coach is available to assist with the training of others and replication of the program at other locations.



Classroom

Classroom staff attend workshops, visit training sites and collaborate with coaches as necessary.

Consistent Programs and Services For ALL Students



Teachers Need Tools

- ✓ Comprehensive Curricula for students with ASD
- ✓ Visual Supports
- ✓ Progress Monitoring
- ✓ IEP Goals
- ✓ Training for General Educators

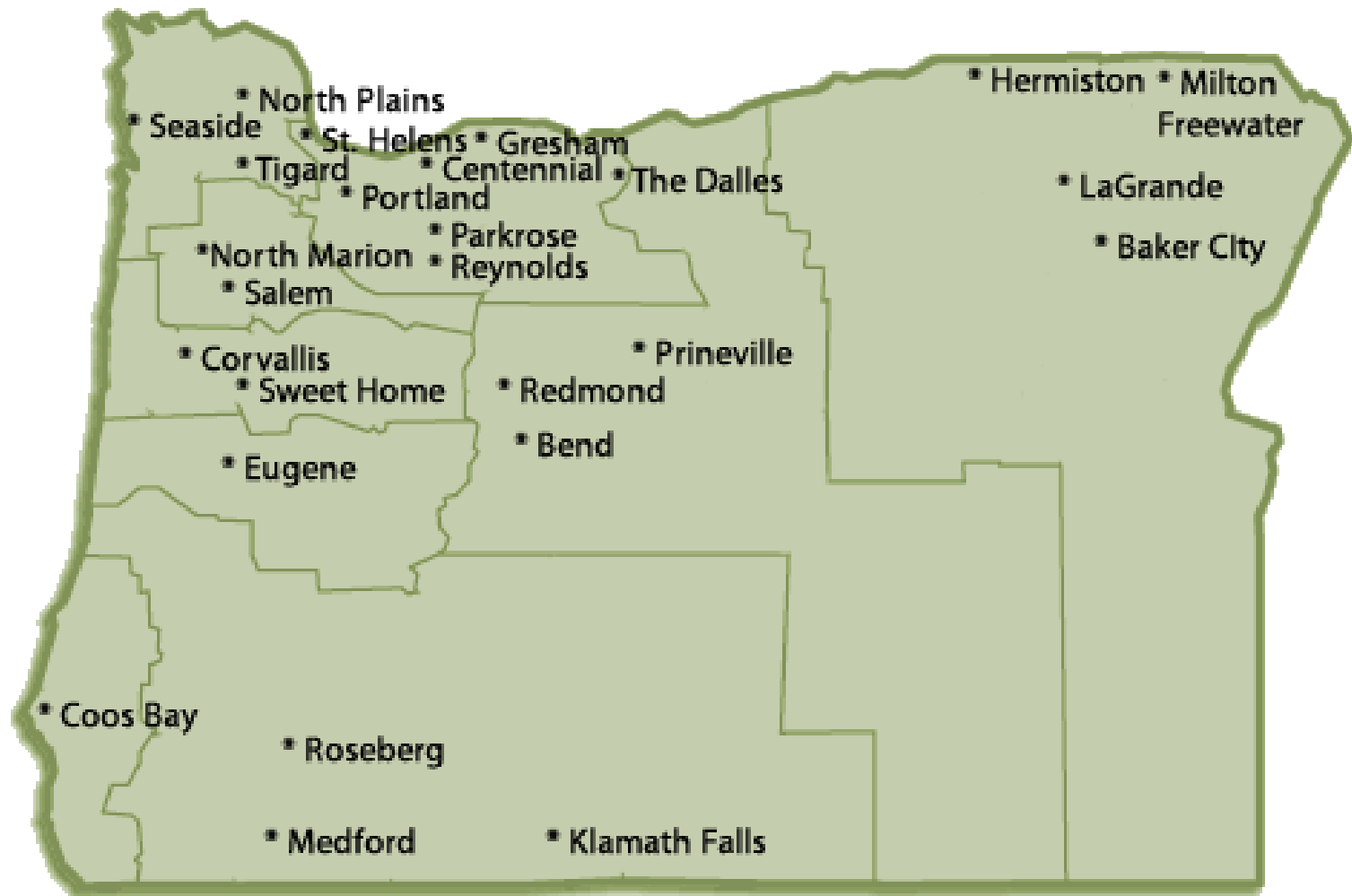


TEACHER TOOLS

General Education Tools for Students
with Autism Spectrum Disorder

- ✓ Fidelity of Implementation Checklists
- ✓ Lesson Plans
- ✓ Technology
- ✓ Guides to the Common Core
- ✓ Transition Planning Across Grade Levels
- ✓ Post-secondary

OrPATS Training Site Locations





Oregon Program Autism Training Sites and Support

OrPATS Staff

Joel Arick PhD

Brenda Hancock M.Ed

Darby Lasley M.S.

Jennie Willis M.S.

Karen Shepherd M.S.

Research to Practice



Presentation

- A complete powerpoint handout will be provided at the presentation and include:
 - How to develop training sites
 - Videos of instructional strategies
 - Fidelity of implementation process
 - Student progress videos
 - Student outcome data
 - Providing on-going professional development